

ARCHITECTURAL ALUMINIUM GLAZING SYSTEMS

# K-VANTAGE SYSTEMS



# JULIET BALUSTRADE

## INTRODUCTION

The Juliet Balustrade is designed to suite with Kawneer's Open-In Window and Sliding Door products. It provides a simple, elegant and affordable balustrade with a virtually seamless external visual appearance and is ideally suited for domestic, residential, offices and commercial applications (subject to barrier loading conditions).

The balustrade is created as part of the 'window package' from an optimised number of engineered components, creating a value engineered solution and offering ease of fabrication and installation.

The Juliet Balustrade is a turnkey solution that completely eliminates the need for additional sub-contractor work as it is totally self-contained and does not interface with any other element of the building structure. Manufactured from aluminium it is mechanically assembled which removes the need for welding and can be manufactured off site.

## PRODUCT FEATURES AND BENEFITS

- Suites with the AA®720 Open-In Window, AA®3572 Lift/Slide Door, and KWD92 UT+
- Single or double leaf designs available
- Size Parameters – minimum width, single leaf is 650mm, maximum width, double leaf is 2 x 1000mm (for widths beyond this, please contact our Technical Services Department)
- Height to the top handrail is 1100mm from outer frame datum
- A wide range of polyester powder paint finishes with up to 30 years guarantee and a range of anodised finishes with up to 25 years guarantee
- Glazing systems and Juliet Balustrade from one manufacturer, offering design flexibility and total project solutions

*Note: Increased Barrier Loading (1.5 kN/m Line Load) are possible, please contact our Technical Services Department for more information.*

## APPLICATION

The Juliet Balustrade is ideally suited for mid to high rise applications and/or where the use of a glazed Juliet Balcony is not permitted.

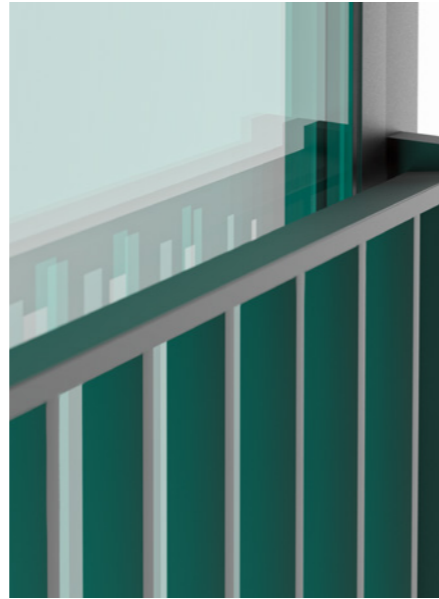
It is the responsibility of the specialist subcontractor to ensure correct product selection for any given application in accordance with current legislation and guidance.

## PERFORMANCE

The Juliet Balustrade has been fully tested in accordance with BS 6180 (Barrier Loading) to 0.74 kN/m Line Load and with BS EN 13049 (Impact Resistance) achieving Class 5.

The Juliet Balustrade, installed and glazed to Kawneer recommended procedures, has been tested and certified in accordance with:

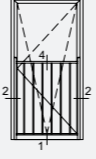
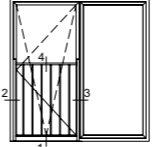
- BS 6180 Line Load and Point Load
  - Line Load: 0.74 kN/m
  - Point Load: 0.50 kN
- BS EN 13049 Impact Testing
  - Impact Test: Class 5 (drop height 950mm)



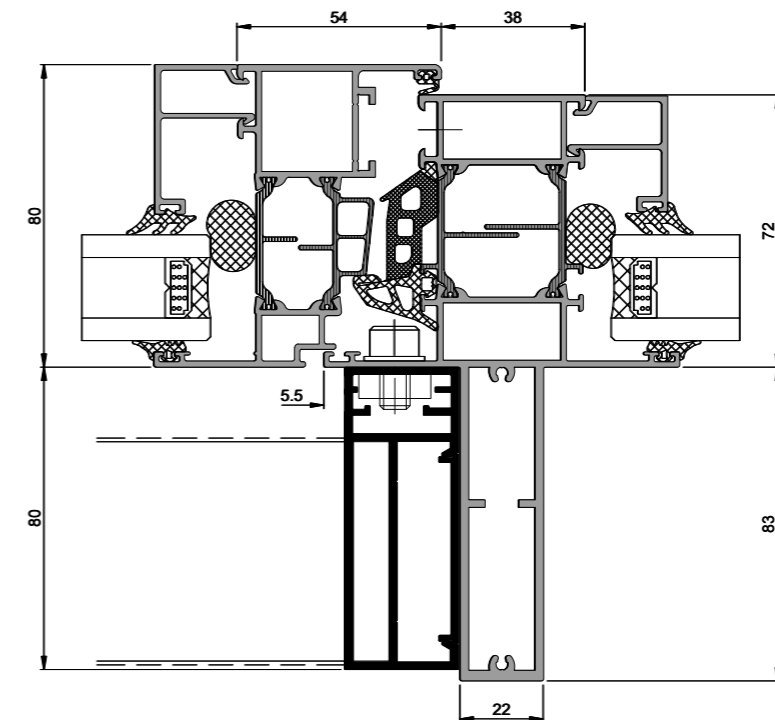
# JULIET BALUSTRADE

## TYPICAL ELEVATIONS

Full details can be downloaded from our website [www.kawneer.co.uk](http://www.kawneer.co.uk)

Elevation	Title	Website CAD ref. no.
	1 AA®720 Tiltturn with Juliet Balustrade - horizontal section cill	H03.01
	2 AA®720 Tiltturn with Juliet Balustrade - vertical section	H02.01
	4 AA®720 Tiltturn with Juliet Balustrade - horizontal section handrail	H05.01
	1 AA®720 Tiltturn with Juliet Balustrade - horizontal section cill	H03.01
	2 AA®720 Tiltturn with Juliet Balustrade - vertical section	H02.01
	3 AA®720 Tiltturn with Juliet Balustrade - vertical section	H04.01
	4 AA®720 Tiltturn with Juliet Balustrade - horizontal section handrail	H05.01

## AA®720 TILTTURN WITH JULIET BALUSTRADE Muntin Horizontal Section

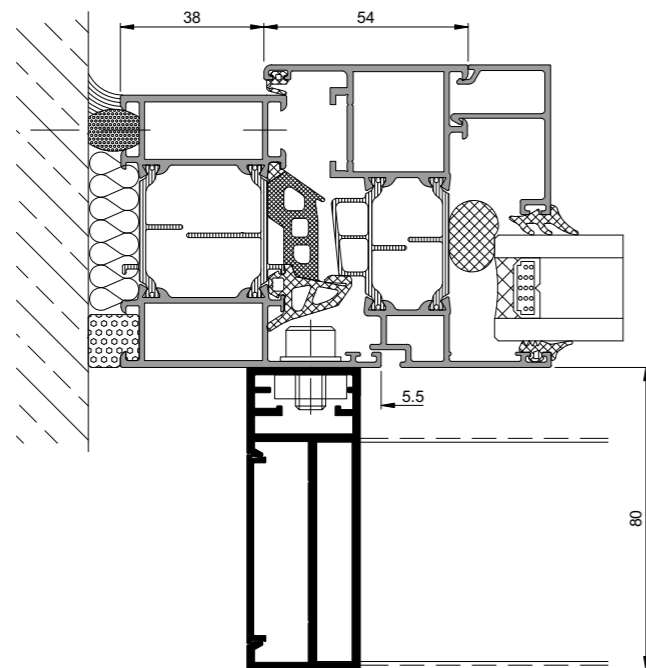


Viewed Externally  
H04.01

# JULIET BALUSTRADE

Full details can be downloaded from our website [www.kawneer.co.uk](http://www.kawneer.co.uk)

## AA<sup>®</sup>720 TILTURN WITH JULIET BALUSTRADE Horizontal Section

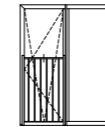
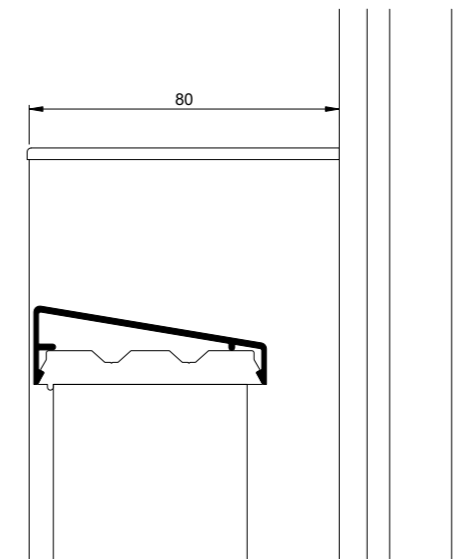


Viewed Externally  
H02.01

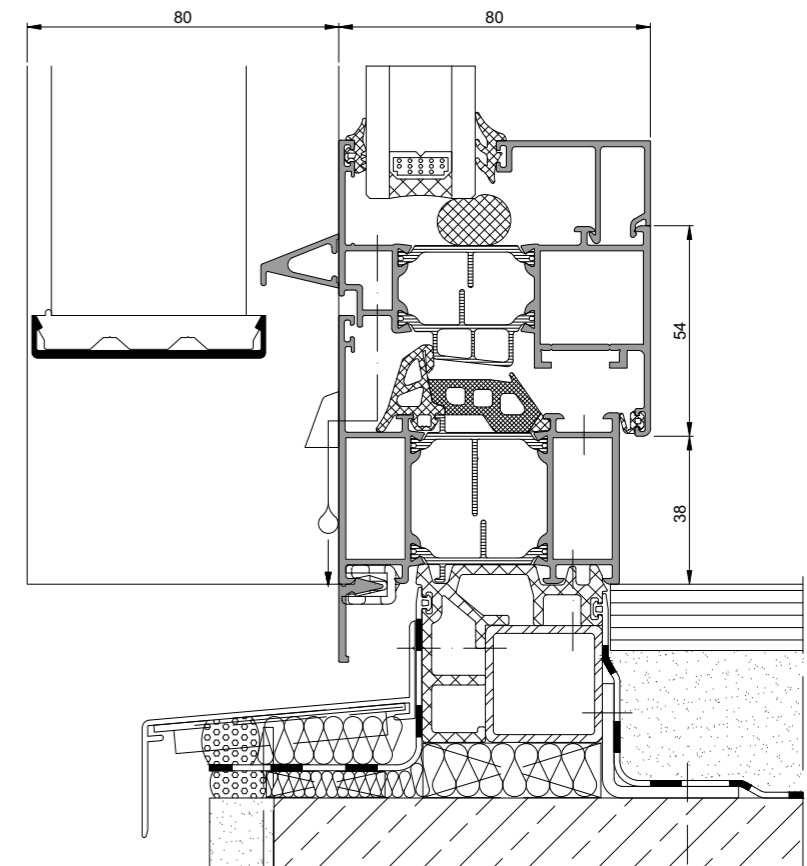
# JULIET BALUSTRADE

Full details can be downloaded from our website [www.kawneer.co.uk](http://www.kawneer.co.uk)

## AA<sup>®</sup>720 TILTURN WITH JULIET BALUSTRADE Vertical Section



Viewed Externally  
H05.01



Viewed Externally  
H03.01

# JULIET BALCONY

## INTRODUCTION

The Juliet Balcony is designed to suite with Kawneer's Open-In Window and Sliding Door products. It provides a simple, elegant and affordable glazed balcony with a virtually seamless external visual appearance and is ideally suited for domestic, residential, offices and commercial applications (subject to barrier loading conditions).

The balcony is created as part of the 'window package' from an optimised number of engineered components, creating a value engineered solution and offering ease of fabrication and installation.

A choice of single or double leaf designs are available to suit specific building requirements and increase the aesthetics of the façade.

The Juliet Balcony is a turnkey solution that completely eliminates the need for additional sub-contractor work as it is totally self-contained and does not interface with any other element of the building structure.

## PRODUCT FEATURES AND BENEFITS

- Suites with the AA® 720 Open-In Window, AA® 3572 Lift/Slide Door, and KWD92 UT+
- Accommodates single glazed panes from 10mm to 18mm thick
- Single or double leaf designs available
- Can be designed as a French Casement or as an Open-In with tilt functionality
- Size Parameters – minimum width, single leaf is 650mm, maximum width, double leaf is 2 x 1000mm (for widths beyond this, please contact our Technical Services Department)
- Height to the top edge of the glazing is 1100mm to 1500mm from finished floor level
- Can be used in 'punched openings', for example, in masonry elevations or as part of curtain wall façades
- A wide range of polyester powder paint finishes with up to 30 years guarantee and a range of anodised finishes with up to 25 years guarantee
- Glazing systems and Juliet Balcony from one manufacturer, offering design flexibility and total project solutions

*Note: Increased balcony widths up to 2500mm and increased Barrier Loading (1.5 kN/m Line Load) are possible, please contact our Technical Services Department for more information.*

## APPLICATION

The Juliet Balcony is best suited to low rise, residential applications.

It is the responsibility of the specialist subcontractor to ensure correct product selection for any given application in accordance with current legislation and guidance.

## PERFORMANCE

The Juliet Balcony has been fully tested in accordance with BS 6180 (Barrier Loading) to 0.74 kN/m Line Load and with BS EN 13049 (Impact Resistance) achieving Class 5.

The Juliet Balcony, installed and glazed to Kawneer recommended procedures, has been tested and certified in accordance with:

- BS 6180 Line Load and Point Load
  - Line Load: 0.74 kN/m
  - Point Load: 0.50 kN
- BS EN 13049 Impact Testing
  - Impact Test: Class 5 (drop height 950mm)

## CONSTRUCTION

The Juliet Balcony consists of a mitred and cleated glazing channel which is mechanically fixed to the AA®720 window frame. The glass panel is retained in the glazing channel using EPDM gaskets and the system is drained and ventilated.

## GLAZING

Single glazed panes from 10mm to 18mm thick can be accommodated.

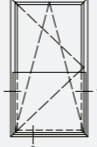
*Note: Please contact our Technical Services Department regarding the use of the Juliet Balcony for specific schemes so that the appropriate glass specification can be established, by the glass supplier, to ensure the performance of the balcony system.*



# JULIET BALCONY

## TYPICAL ELEVATIONS

Full details can be downloaded from our website [www.kawneer.co.uk](http://www.kawneer.co.uk)

Elevation	Title	Website CAD ref. no.
	1 AA®720 Tiltturn with Juliet Balcony - horizontal section	H02.01
	2 AA®720 Tiltturn with Juliet Balcony - vertical section	H04.01

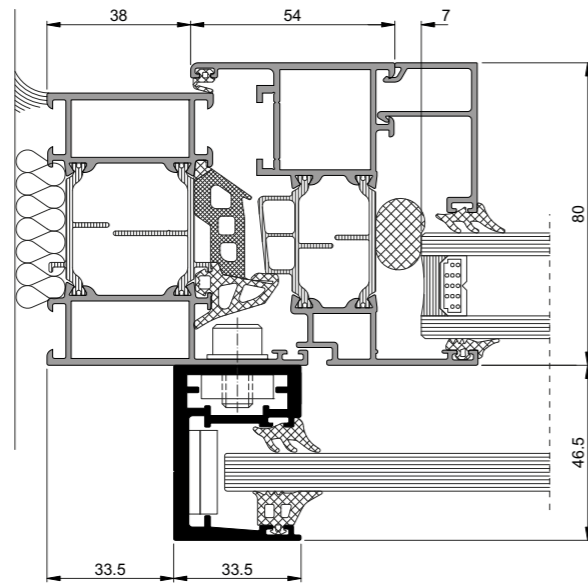
	1 AA®720 Tiltturn with Juliet Balcony - horizontal section	H02.01
	2 AA®720 Tiltturn with Juliet Balcony - vertical section	H04.01



# JULIET BALCONY

Full details can be downloaded from our website [www.kawneer.co.uk](http://www.kawneer.co.uk)

## AA<sup>®</sup>720 TILTURN WITH JULIET BALCONY Horizontal Section

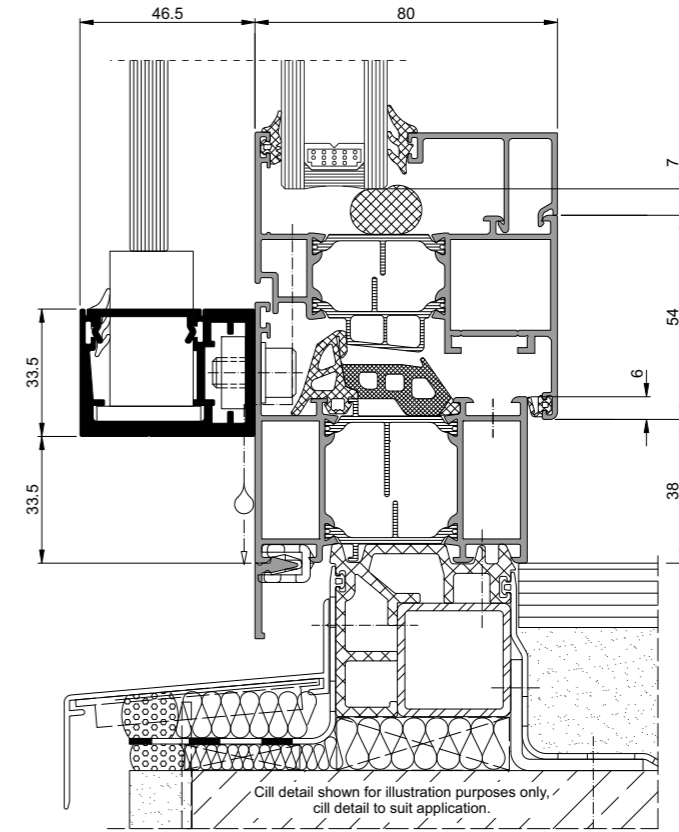


H02.01

# JULIET BALCONY

Full details can be downloaded from our website [www.kawneer.co.uk](http://www.kawneer.co.uk)

## AA<sup>®</sup>720 TILTURN WITH JULIET BALCONY Vertical Section



H04.01

# SUPPORTING YOUR PROJECTS

## A FULL RANGE OF GUARANTEED COLOURS AVAILABLE

Established in the UK for over 60 years and powder coating profiles at its Runcorn base for 50 years, Kawneer has deep knowledge and experience in the specification and application of colour and paint systems.

The existing powder coating facility was converted to 'chrome free' – the first existing plant in the UK to be upgraded to this environmentally friendlier pre-treatment system – which gave Kawneer additional impetus to become a QUALICOAT approved applicator.

Quality and consistency of quality continues to be the main feature of QUALICOAT UK & Ireland, which includes third party testing of all certified powder formulations and pre-treatment systems that make up the QUALICOAT approval process. Kawneer has achieved 'Seaside' specification standard with this third party accreditation programme.

Kawneer Permacover™ is a high quality polyester powder paint finish, offering a wide range of solid and metallic colours providing outstanding resistance to environmental conditions. Kawneer Permacover™ has a 15 year gloss and 30 year matt and metallic guarantees subject to application and Kawneer acceptance in marine, industrial, swimming pools or other aggressive atmospheres.

To ensure the highest quality finish, powder coating is carried out in house as part of our single-source responsibility.

Kawneer Permanodic® is a range of subtle anodised colours which have been specifically developed for architectural glazing systems. Kawneer Permanodic® is a tried and tested anodising process, proven in accelerated laboratory tests, extensive field trials and contract experience. Subject to compliance with Kawneer's requirements, a 25 year finishes guarantee can be obtained.



## AUTHORITIES

### ISO 9001

Quality Management System

### BS EN 12020

Extruded precision aluminium profiles

### BS EN 12206-1

Paint and varnishes. Coating of aluminium and aluminium alloys for architectural purposes

### BS 3987

Specification for anodic coatings

### BS 4255 Part 1

Specification for non-cellular gaskets

### BS 6180

Barriers in and about buildings – Code of practice

### BS EN 13049

Soft and heavy body impact – Test method, safety requirements and classification

### BS 6262-4

Glazing for buildings – Part 4: Safety related to human impact – Code of practice

### BS 6206

Impact Performance requirements for flat safety glass and safety plastics for use in buildings

### EN 1863-2

Glass in building - Heat strengthened soda lime silicate glass - Part 2: Evaluation of conformity/Product standard

### EN 12150-2

Glass in building - Thermally toughened soda lime silicate safety glass - Part 2: Evaluation of conformity/Product standard

### EN 12600

Glass in building - Pendulum test - Impact test method and classification for flat glass

### EN 13024-2

Glass in building - Thermally toughened borosilicate safety glass - Part 2: Evaluation of conformity/Product standard

### EN 14179-2

Glass in building - Heat soaked thermally toughened soda lime silicate safety glass - Part 2: Evaluation of conformity/Product standard

### EN 14321-2

Glass in building - Thermally toughened alkaline earth silicate safety glass - Part 2: Evaluation of conformity/Product standard

### EN 14449

Glass in building - Laminated glass and laminated safety glass - Evaluation of conformity/Product standard

### EN 15682-2

Glass in building - Heat soaked thermally toughened alkaline earth silicate safety glass - Part 2: Evaluation of conformity/Product standard

# SUPPORTING YOUR PROJECTS

## PROJECT ASSISTANCE

Kawneer's regionally based team of Architectural Advisers and the Architectural Services Team based at our Head Office in Runcorn are able to provide project advice and support:

Tel: 01928 502604

Email: kawneerAST@arconic.com

Information on Kawneer's extensive range of Curtain Wall, Window, Framing, Door, Fire Resistant and Sliding Solutions can also be obtained from our Head Office by calling:

Tel: 01928 502612

Kawneer UK Ltd is part of Building and Construction Systems, and enjoys the extensive resources of the entire Kawneer organisation, allied to the specific glazing systems experience of Kawneer's many operations around the world. As a result of this our partners and customers have direct access to one of the largest pools of technical expertise in the construction industry.



## OTHER BROCHURES AVAILABLE ON REQUEST FROM KAWNEER ARE:

- Finishes
- Door Systems
- Framing Systems
- Curtain Wall Systems
- Unitised Curtain Wall Systems
- LouvreShield
- Sliding Solutions
- Fire Resistant Systems
- Window Systems
- Passive House Façade Solutions
- Suited Handle Range
- Sustainability
- Maintenance and Cleaning
- Education
- Residential
- Perspectives
- The Architects Guide to Aluminium in Building

To download these brochures please visit [www.kawneer.co.uk](http://www.kawneer.co.uk)

June 2024



Kawneer's continuous development and engineering programmes may bring about product changes. Kawneer reserves the right to introduce without notice such changes which will not detract from the product's performance.

© KAWNEER UK LTD



Kawneer UK Ltd  
Astmoor Road  
Astmoor Industrial Estate  
Runcorn  
Cheshire  
WA7 1QQ  
United Kingdom  
Tel: +44 (0) 1928 502500

London Office  
12 Berwick Street  
Soho  
London  
W1F 0PN  
Tel: +44 (0) 207 287 5911

Architectural Services Team  
Tel: +44 (0) 1928 502604  
Email: [kawneerAST@arconic.com](mailto:kawneerAST@arconic.com)  
[www.kawneer.co.uk](http://www.kawneer.co.uk)